

# POLICE AND CRIME COMMISSIONER FOR LEICESTERSHIRE

PAPER MARKED

# B

## ETHICS, INTEGRITY AND COMPLAINTS COMMITTEE

Report of	CHIEF CONSTABLE
Subject	SAFEGUARDING – ADULTS AND CHILDREN
Date	FRIDAY 24 MARCH 2017 – 2.00 PM
Author	BARNEY THORN, SAFEGUARDING PARTNERSHIP MANAGER

### Purpose of Report

1. The purpose of this report is for members' consideration in respect of how the Force understands and implements its Safeguarding responsibilities within the legislative framework.

### Background

2. Leicestershire Police works within the following legislative framework in regard to safeguarding adults and children:
  - i. Children Act 1989 and 2004 impose statutory duties on specified agencies (including the police) to make arrangements to ensure their functions are discharged having regard to the need to safeguard and promote the welfare of children. This includes the establishment of Local Safeguarding Children Board (LSCB).
  - ii. LSCB Regulations include requirements to undertake Serious Case Reviews in certain circumstances.
  - iii. Working Together 2015 (guidance issued under the Local Authority Social Services Act 1970) is in place to safeguard and promote the welfare of children. This will include responsibilities for crimes committed against children, Looked After Children, Child Sexual Exploitation and children missing from home.
  - iv. The Care Act 2015 sets out the roles of public services in safeguarding all adults, including the requirement to undertake Safeguarding Adults Reviews in certain circumstances.
  - v. Domestic Violence, Crime and Victims Act 2004 includes requirements under the Code of Practice for Victims of Crime and requirements to undertake Domestic Homicide Reviews in certain circumstances.

- vi. Criminal Justice and Court Services Act 2000/Criminal Justice Act 2003 require an arrangement for the "responsible authorities" tasked with the management of registered sex offenders, violent and other types of sexual offenders, and offenders who pose a serious risk of harm to the public. This includes a requirement to complete Serious Case Reviews in certain circumstances.
3. Although not a statutory requirement, following the death of Fiona Pilkington in 2007, members of statutory public agencies in Leicester, Leicestershire & Rutland agreed a definition of an 'adult at risk' and when information was to be shared between those statutory agencies.

### **Structure**

4. The Crime and Intelligence Directorate (CAID) is managed by a Detective Chief Superintendent, and is made up of three business strands: Local Investigations, Serious Crime and the Force Intelligence Bureau. Each strand is headed up by a Detective Superintendent. All specialist safeguarding departments are under the portfolio of the Head of Serious Crime, who works closely with the other Superintendents to ensure a force wide approach to vulnerability and safeguarding. Child Safeguarding and Adult Safeguarding are in turn each led by a DCI, who again work closely together to ensure a co-ordinated approach. The Detective Chief Superintendent reports to an Assistant Chief Constable on operation matters.
5. See Appendix A for organisational structure of Serious Crime Dept.

### **How Safeguarding is delivered**

6. Safeguarding vulnerable adults and children is recognised across the Force as a priority function. Significantly high levels of leadership from Chief Officers support ..... and partnership working.
7. All frontline Response and Neighbourhood officers and staff are trained to look for vulnerability in any scenarios they deal with. When vulnerability is identified, it is their responsibility to undertake any immediate safeguarding actions that are required, as well as complete a Vulnerability Referral. This is automatically sent via NICHE to the Child Referral Desk or the Adult Referral Desk as appropriate, and the single form covers vulnerable children, adults and domestic incidents as well as the other subsets of vulnerability such as FGM, CSE & HBV.
8. The report is then reviewed by the appropriate specialist team(s) and following a strategy discussion with the relevant partner agency, the decision will be taken as to what action is needed, ie a police criminal investigation (single specialist dept or joint specialist teams), joint-investigation with partner agencies, safeguarding interventions, information sharing because a safeguarding threshold has been met or information sharing because the information is relevant to that partner agency.
9. Governance around safeguarding performance is in place at all levels, through the PDG, Directorate Performance Documents/Meetings, Daily Management Meeting and a Vulnerability Delivery Plans which incorporates all the different areas of business.
10. Delivering on safeguarding obligations in a multi-agency setting include the Multi Agency Risk Assessment Conferences (MARAC) which manage high risk victims (and families) of domestic abuse; the Sexual Abuse Referral Centres (SARCs) which support victims of sexual assault – Juniper Lodge for adult victims, Serenity for child victims; and UAVA, a single provider of support to victims of domestic abuse across the force area.

## **Current and future developments**

### **Vulnerability Hub**

11. Leicestershire Police have recently created a multi-agency Vulnerability Hub by relocating the CSE team, the Missing from Home team and the Adult Referral Team to Wigston Police Station to work alongside the Child Referral Desk and multi-agency partners. These include a health-based CSE administrator, a Drug & Alcohol Worker, Social Care representation from Leicester City and Leicestershire County and Leicestershire Fire & Rescue Service. Much of this positive change has been driven by the CSE Executive Group which has active participation at a strategic level. It is chaired by DCC Bannister. PCC support has been invaluable through the SPDF and driven change.
12. Co-locating the services has allowed for a pooled knowledge in regards to vulnerable children and adults, allowing improved and immediate access to relevant information and more timely decision making around safeguarding needs and/or the need for a criminal investigation.

### **Digital Hub**

13. The Paedophile On Line Team (POLIT), High Tech Crime Unit (HTCU), Digital Media Investigation Team and Cyber Crime Team have also recently been co-located to create a Digital Hub, improving the capacity and capability to identify victims of abuse, safeguard those victims and prosecute offenders.

### **Domestic Abuse Partnership Team**

14. A recent bid has been made to the Home Office for funding from the Violence Against Women and Girls Fund. If approved, it will dramatically increase the Force's capability to deal with domestic incidents, both repeat and initial; co-located partnership working will increase the service given to victims across Leicester, Leicestershire & Rutland.

### **MARAC**

15. The MARACs in operation across the Force area have been assessed as effective in the recent OFSTED Inspection. In order to continue the development of MARAC activity, a bid has been made for VAWG funding to recruit a dedicated MARAC Manager/Chair.

### **Vulnerability Strategy**

16. The Force is currently working on a Vulnerability Strategy to further ensure that vulnerability is considered in all aspects of police interaction and reflected in the working practices.

### **Child Strategy**

17. The Force is also working on a Child Strategy to continue the development of a child related focus to all areas of business.

## **APP and Policies & Procedures**

18. Leicestershire Police currently works to the College of Policing Authorised Professional Practice for the investigation of Child Abuse and Domestic Abuse, with further guidance in place in relation to local working practices/contacts/governance etc.
19. Authorised Professional Practice on Managing Adults at Risk is expected from the College of Policing in 2017. Until that time, local Policy and Procedure documents are in place.

## **Serious Case Reviews, Safeguarding Adult Reviews & Domestic Homicide Reviews**

20. As already outlined in Section 2, requirements are in place under the legislative framework to undertake Serious Case Reviews, Domestic Homicide Reviews and Safeguarding Adult Reviews in certain circumstances. Discretionary reviews can also be undertaken in certain circumstances if agreed by the partner agencies involved. Leicestershire Police has a full time Serious Case Review Officer post in place to manage the Force's contribution to these reports.

21. Learning from these reviews is managed via a force wide Op Fox Group, chaired by DCC Bannister, and via the Serious Case Review Group chaired by the Head of the Crime and Intelligence Directorate. Action plans are in place and managed via these groups.

### **HMIC Inspections and Findings**

#### **PEEL Inspection (Effectiveness) 2016**

22. The HMIC report assessed Leicestershire Police as Requiring Improvement following the 2016 inspection. Seven noted Areas For Improvement (AFI) around Vulnerability and Investigation have been incorporated into an action plan managed by the CAID Supt, Serious Crime.

#### **Child Protection Inspection 2017**

23. The HMIC Child Protection Inspection took place in Leicestershire in January 2017. The report is yet to be released, so AFIs are not yet known. Points made during the Hot Debrief have however already been incorporated into the above action plan to ensure ongoing development in those noted areas.

### **Training Schedule**

24. In 2016, Leicestershire Police rolled out its Protecting Vulnerable People 4 programme. The modular programme has focused on a wide range of specific areas of safeguarding and vulnerability. It is a video based format, delivered by subject experts, supported by on line resources and is designed to be bite sized learning delivered at shift briefings. Protected Learning Time is now in place for Patrol & Response Team officers. See Appendix B for details of the PVP4 programme.
25. The programme is supported by quarterly video briefings delivered by the DCI Adult Safeguarding, which includes reinforcement of PVP4 and new areas of learning following the meeting of Op Fox and the CAID Serious Case Review Group. This assists the Force in ensuring key messages from learning reviews reach frontline officers in an effective and efficient manner. The Chief Officer Team have all participated in a specific video briefing (February 2016).
26. All officers who work within the Child Protection Teams (CAIU, CSE, POLIT) are required to undertake a specific child protection investigation course known as the Specialist Child Abuse Investigator Development Programme (SCAIDP). This is an accredited course, to an undergraduate standard which requires continuous professional development in order to maintain the accreditation.

### **Implications**

**Financial :** None

**Legal :** None

**Equality Impact Assessment :** N/A

**Risks and Impact:** N/A

**Link to Police and Crime Plan:** Vulnerability

**Communications:** A communications plan is in place throughout the year to deal with issues that may arise due to the sensitive nature of Safeguarding.

### **List of Appendices**

Appendix A: Structure of Safeguarding

Appendix B: Screens of PVP4

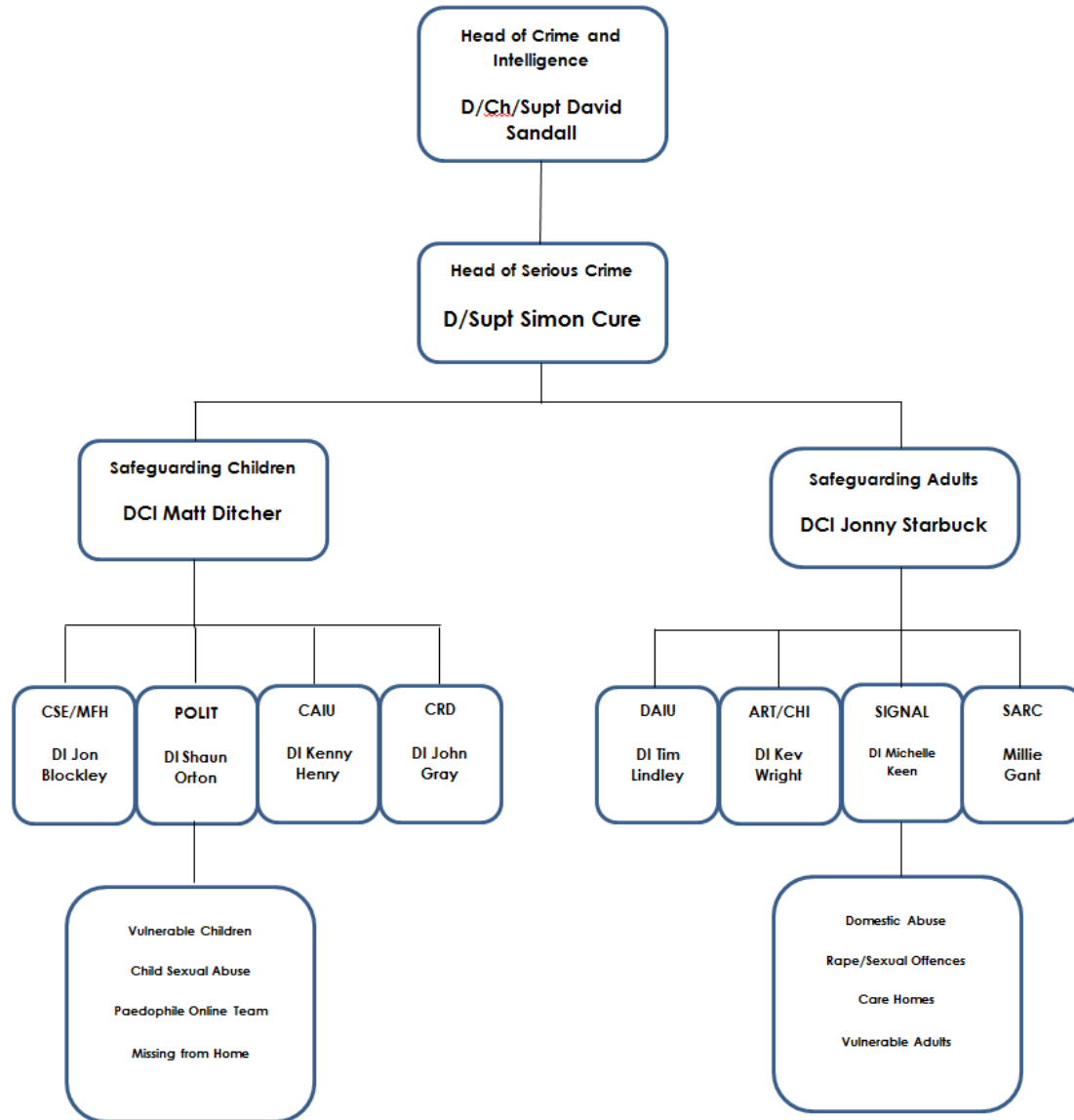
**Person to Contact**

Barney Thorne, Safeguarding Partnership Manager  
Tel: 0116 2485162  
Email: [Barney.thorne@leicesestershire.pnn.police.uk](mailto:Barney.thorne@leicesestershire.pnn.police.uk)

Roger Bannister, DCC  
Tel: 0116 248 2005  
Email: [roger.bannister@leicestershire.pnn.police.uk](mailto:roger.bannister@leicestershire.pnn.police.uk)

**Ethics, Integrity and Complaints Committee**

**Structure of Serious Crime**



Ethics, Integrity and Complaints Committee

Protecting Vulnerable People version 4

The screenshot displays the EMCHRS L&D website interface. At the top, a dark blue navigation bar contains the links: Home, Course Resources, IT Resources, and Video Store. Below this is a light blue banner featuring four police force crests on the left, a central graphic of a laptop with an open book, and the EMCHRS L&D logo on the right. A dark blue button labeled 'Course Resources' is positioned on the left side of the banner. The main content area is divided into three white panels, each with a representative image, a title, a brief description, and a 'Learn More' button. The first panel, 'Leadership Programme', shows a hand pointing at glowing lightbulbs. The second, 'Forensic Matters', shows a fingerprint. The third, 'Protecting Vulnerable People', shows a child holding an adult's hand.



## Protecting Vulnerable People (PVP)

Welcome to Protecting Vulnerable People for Leicestershire Police. The aim of this training is to help you to recognise the signs of vulnerability, to understand what to do and how to record it. For each of the topics below, there is a brief presentation.

There are also links to other useful documents, resources and relevant NCALT packages. The presentations have been designed to be shown at shift or team briefings but they, and all the resources, can be accessed by anyone at any time.



Domestic Abuse

[Learn More](#)



Female Genital Mutilation (FGM)

[Learn More](#)





Honour Based Abuse/  
Forced Marriage

[Learn More](#)



Crime in Adult Care Settings  
(Mental Capacity Act)

[Learn More](#)



Think Child/  
Hear the Child's Voice

[Learn More](#)



Child Sex Exploitation

[Learn More](#)



Mental Health

[Learn More](#)



Missing and  
Absent From Home

[Learn More](#)



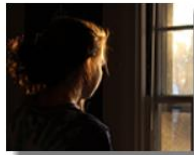
Human Trafficking and  
Modern Slavery

[Learn More](#)



Vulnerability Referral Forms  
& Crime Recording

[Learn More](#)



Rape

[Learn More](#)



Making Safeguarding  
Personal

[Learn More](#)

## Domestic Abuse

### Training Material



#### Presentation

[Domestic Abuse](#)



#### Video

[Coercive Control Video \(NCALT MLE\)](#)



#### Additional Resources

[Coercive Control FAQs](#)  
[Domestic Violence Website](#)  
[Paladin](#)  
[NCDV](#)  
[Women's Aid](#)  
[Coercive Control e-book \(Digital Trust\)](#)



#### E-Learning

[NEW - Coercive Control](#)

[Public Protection - Initial Response](#)  
[Public Protection - Abusive Relationships](#)  
[Stalking and Harassment](#)  
[DASH](#)

Please log in to the:

[NCALT MLE](#)

